

Computer and Network Orientation

Kathy Myers, Director of IT

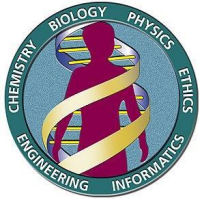
Evan Lavelle, Bioinformatics Analyst

Ethan Price, Project Assistant

Brought to you by:



Ethan Price – NCGR Project Assistant



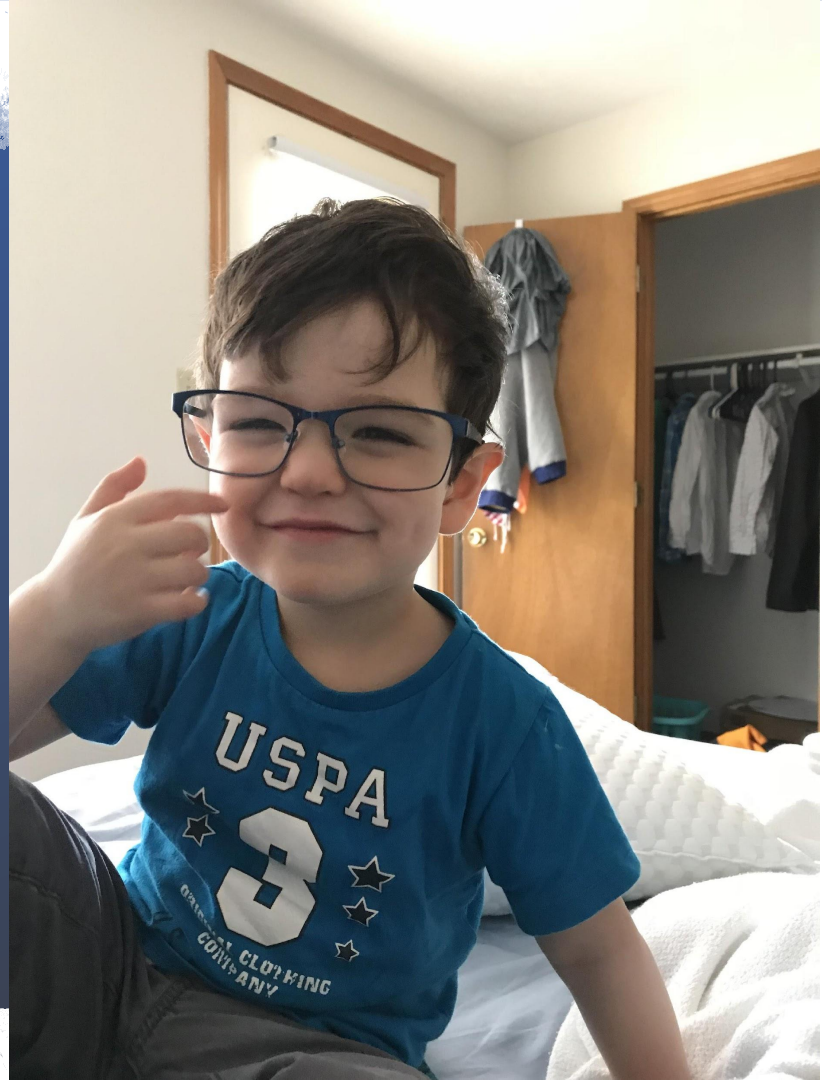
Born & raised in
Albuquerque,
NM



Back to School!
Engineering /
C.S.

Grocery Industry
for 15 years





Overview

- DON'T PANIC!
- Computer terms ahead
- Sounds like a foreign language
- By the end of the week, you will understand

What we should accomplish

Ensure everyone:

- Has a working personal computer and access to the resources provided
- Has required and suggested software
- Understands “shell” and “operating system”
- Terminal access (MobaX for Windows. Mac users have a built in terminal.)
- Can login to the Linux analysis server *logrus* housed at NCGR

Why are we doing this?

- Scientific computers are *SUPER FAST* and needed for big data
 - CPU(s): 88
 - MemTotal: 528074992 kB
- They also only do what they are told
- They are accessed using a terminal interface

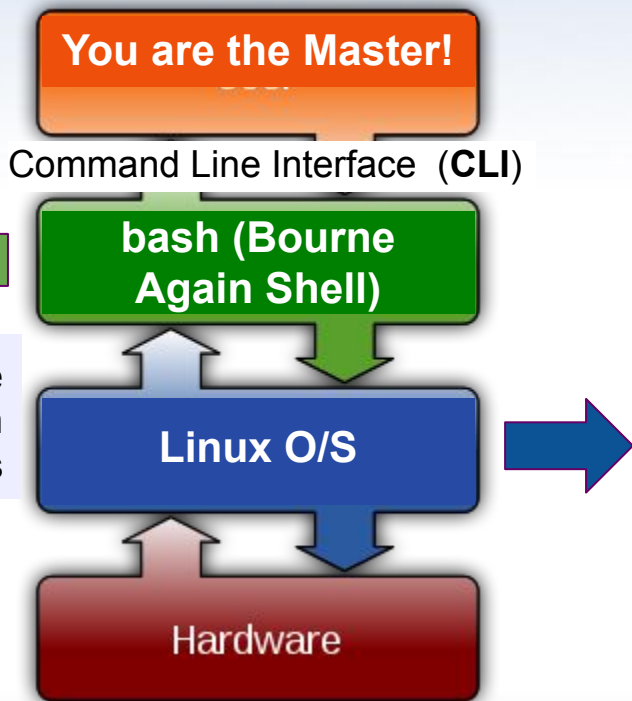
What's a shell? What's an operating system (O/S)?



terminal

Manages computer hardware, software resources, and provides common services to software programs

*logrus
analysis
server*



O/S Common features

- [Process management](#)
- [Interrupts](#)
- [Memory management](#)
- [File System](#)
- [Networking](#)
- [Security](#)

Hardware: Central processing unit (CPU) disk, RAM, graphic card, sound card, motherboard, etc.

What is *logrus*?

- *logrus* is the name of an NCGR compute analysis server that uses Linux as an operating system
- Running bioinformatics programs on a desktop machine is oftentimes infeasible (not enough CPUs, disk, RAM)
- Logging into *logrus* through a “terminal” enables us to leverage its vast compute power for large datasets

Terminal

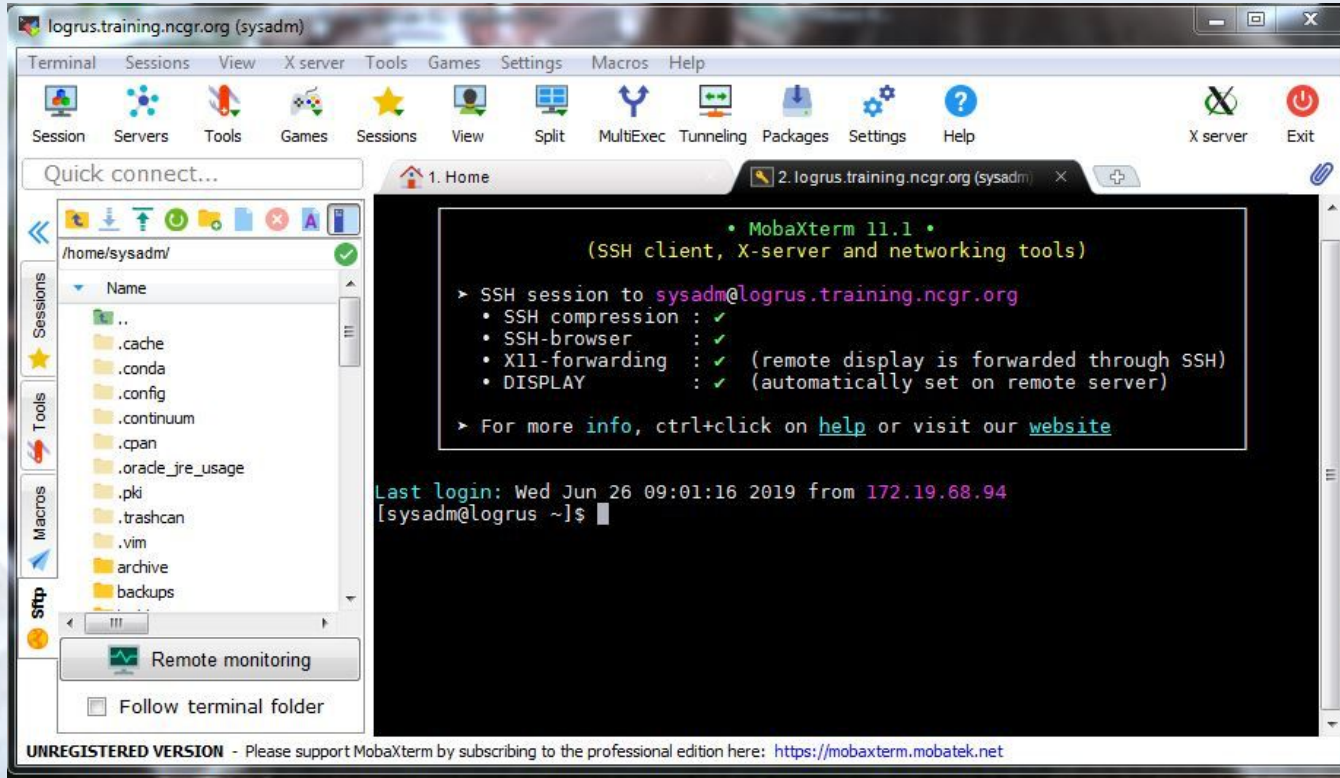
(needed to connect to the analysis server *logrus* from your laptop)

- Windows: MobaX
- Macintosh: built-in terminal
- Linux: Xterm & others are built in

Windows users: Connect using MobaX terminal

1. Click on “New session”
2. Remote host gateway.training.ncgr.org
3. Select “Specify username” checkbox
4. Enter your username
5. Port 44111
6. Click on “OK”
7. Do not save your password
8. You should now see a terminal connection

MobaX Terminal



Pasting into MobaX

- A user cannot paste into the MobaX terminal by use of CTRL + v
- Right clicking and selecting “paste” will open a dialogue box to confirm the text to be pasted
- If you want to paste upon simply right-clicking, select the terminal tab in settings configuration, then check “paste using right-click” in the terminal features box

Logging into *logrus* remotely (e.g. from home)

Indicate port number 44111 which firewall allows

Windows (using MobaX)

Host Name = gateway.training.ncgr.org

Port = 44111

Mac

```
$ ssh -p 44111 <username>@gateway.training.ncgr.org
```

Signing in to *logrus*

Login: First letter of first name & up to seven letters of last name

password: provided over the phone or by google drive by Ethan

Ex: John Jayden is jjayden

Ex: Ashley Smitherson is asmither

Mac and Linux users use SSH (Secure Shell) to login to logrus

```
$ ssh -p 44111 <username>@gateway.training.ncgr.org
```

Will then ask you for your Password:

Result:

```
[<username>@logrus ~]$
```

Change your password!

1. While logged into logrus
2. Pick a strong password
 - Ten characters or more
 - Mixed Case, digits, punctuation
3. Change your password
<you> \$ **passwd**

Q / A



NCGR

National Center for Genome Resources